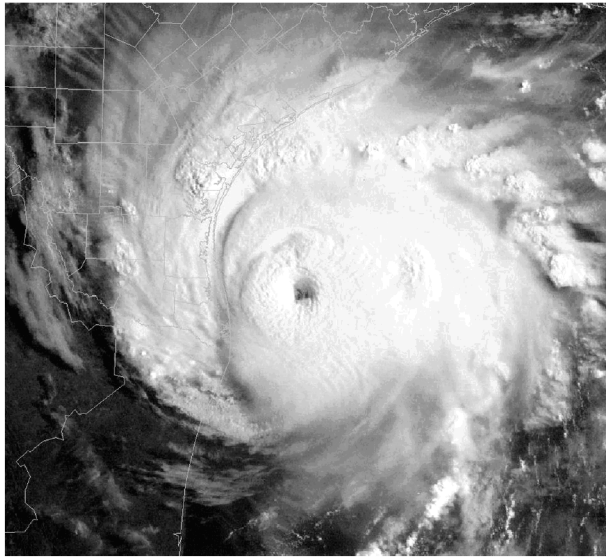


-
1. Base your answer to the following question on the satellite image below, which shows a Northern Hemisphere hurricane.

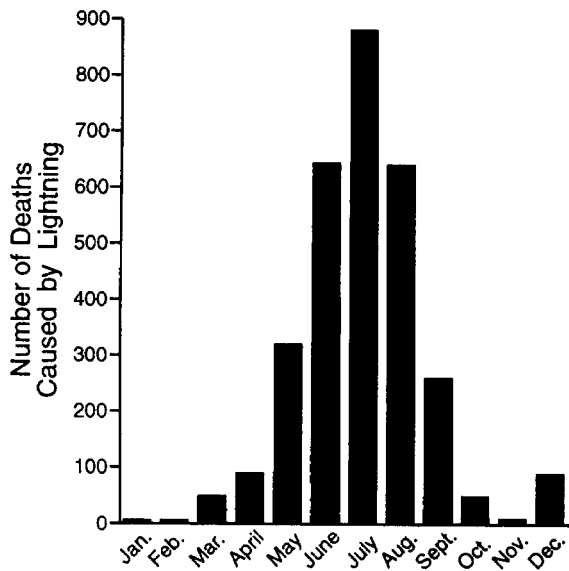


Clouds form in the hurricane because the air is

- 1) sinking, expanding, and cooling
 - 2) sinking, compressing, and warming
 - 3) rising, expanding, and cooling
 - 4) rising, compressing, and warming
-
- | | |
|--|---|
| <p>2. Tornadoes occur when a very cold, dry air mass meets a very warm, wet air mass. Which two air masses would most likely form a tornado when they meet?</p> | <p>4. If a low-pressure system follows a typical storm track across New York State, it will move toward the</p> |
| <ol style="list-style-type: none">1) cP and cA2) cT and mP3) cP and mT4) mP and mT | <ol style="list-style-type: none">1) southeast2) southwest3) northeast4) northwest |
| <p>3. Why is it possible for no rain to be falling from a cloud?</p> | |
| <ol style="list-style-type: none">1) The water droplets are too small to fall.2) The cloud is water vapor.3) The dewpoint has not yet been reached in the cloud.4) There are no condensation nuclei in the cloud. | |
-

5. The graph below shows the total number of deaths per month caused by lightning in the United States between 1959 and 1990.

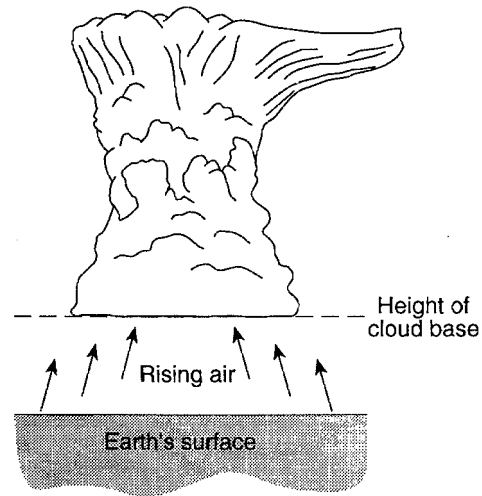
Total Deaths by Lightning (1959 – 1990)



Based on the information on the graph, which prediction about lightning deaths in the United States in the year 2000 would be most accurate?

- 1) Most deaths will occur along the eastern coastline.
- 2) The number of deaths will exceed 900.
- 3) The greatest number of deaths will occur during summer.
- 4) Most deaths will be the result of hurricanes.

6. The diagram below shows air rising from the Earth's surface to form a thunderstorm cloud.



According to the Lapse Rate chart, what is the height of the base of the thunderstorm cloud when the air at the Earth's surface has a temperature of 20°C and a dewpoint of 12°C?

- 1) 1.0 km
- 2) 1.5 km
- 3) 3.0 km
- 4) 0.7 km

Answer Key
sever weather website [Jan 29, 2016]

- 1. 3
 - 2. 3
 - 3. 1
 - 4. 3
 - 5. 3
 - 6. 1
-